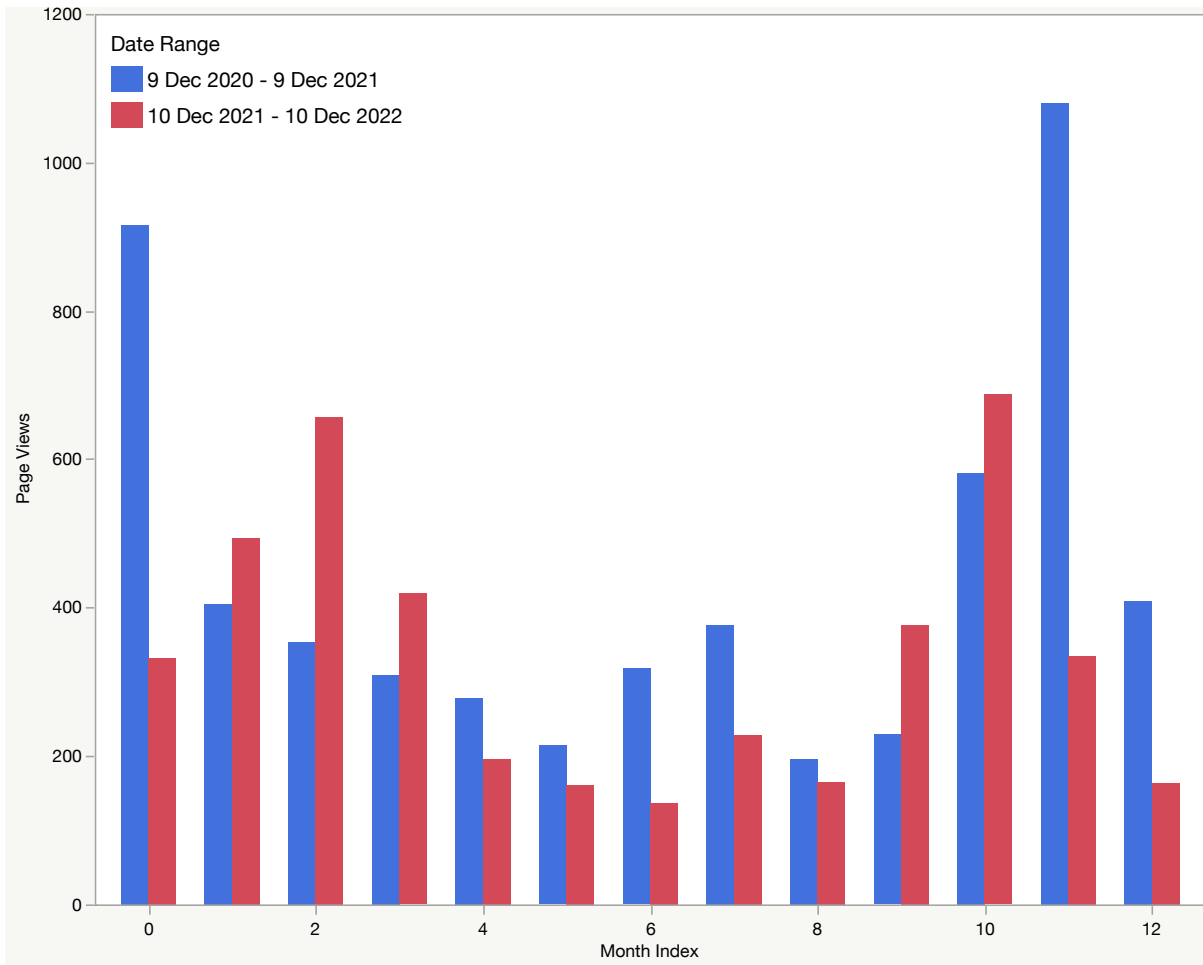


Webmaster's and archivist's report 2022

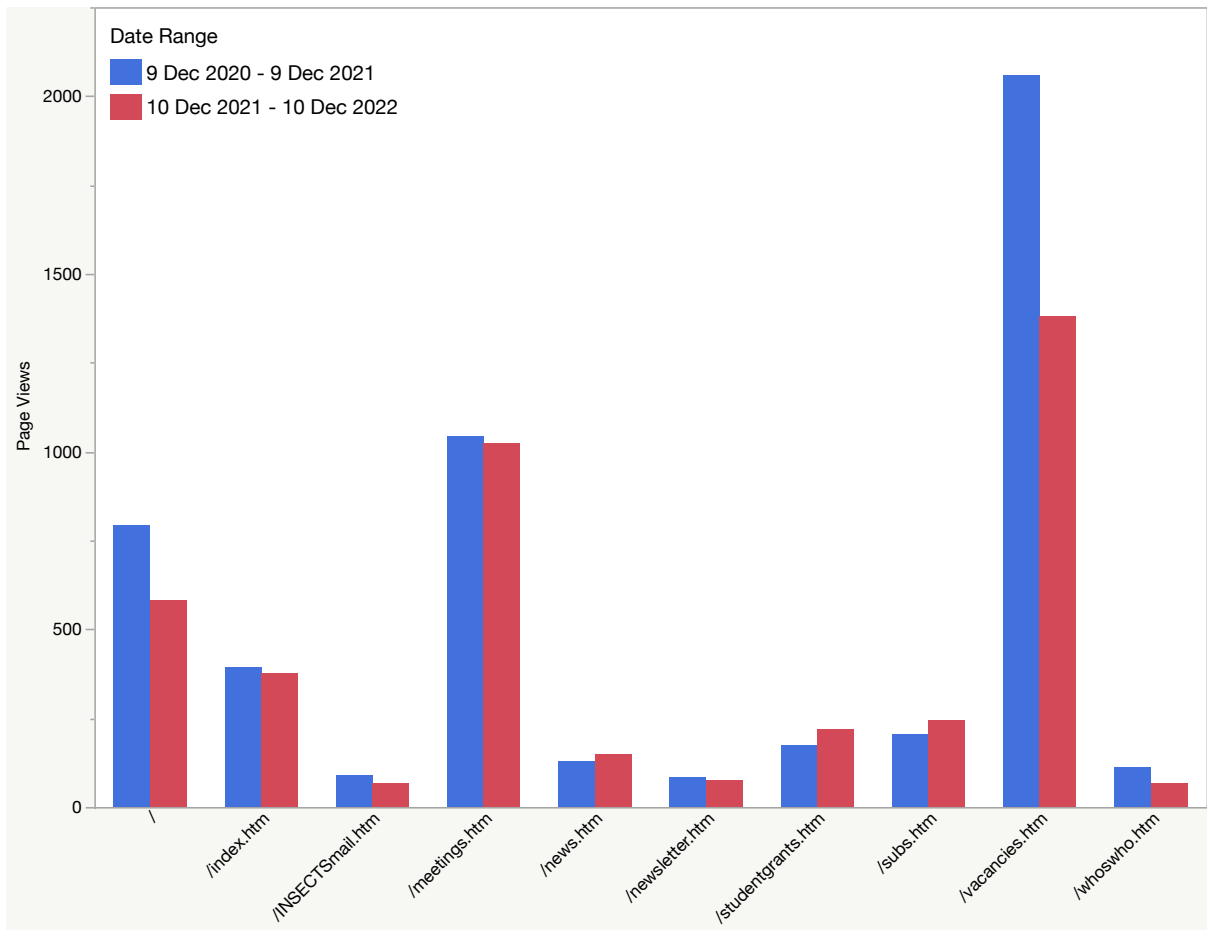
Webmaster's report

Overall web traffic to iussi.org/NWEurope/ is slightly down on last year, mostly towards the end of the year, possibly because information about the winter meeting has largely been distributed by e-mail and the google docs page. However, there was higher traffic in spring 2022, perhaps associated with the upcoming IUSSI international meeting in San Diego (note that December is not comparable, as 2021

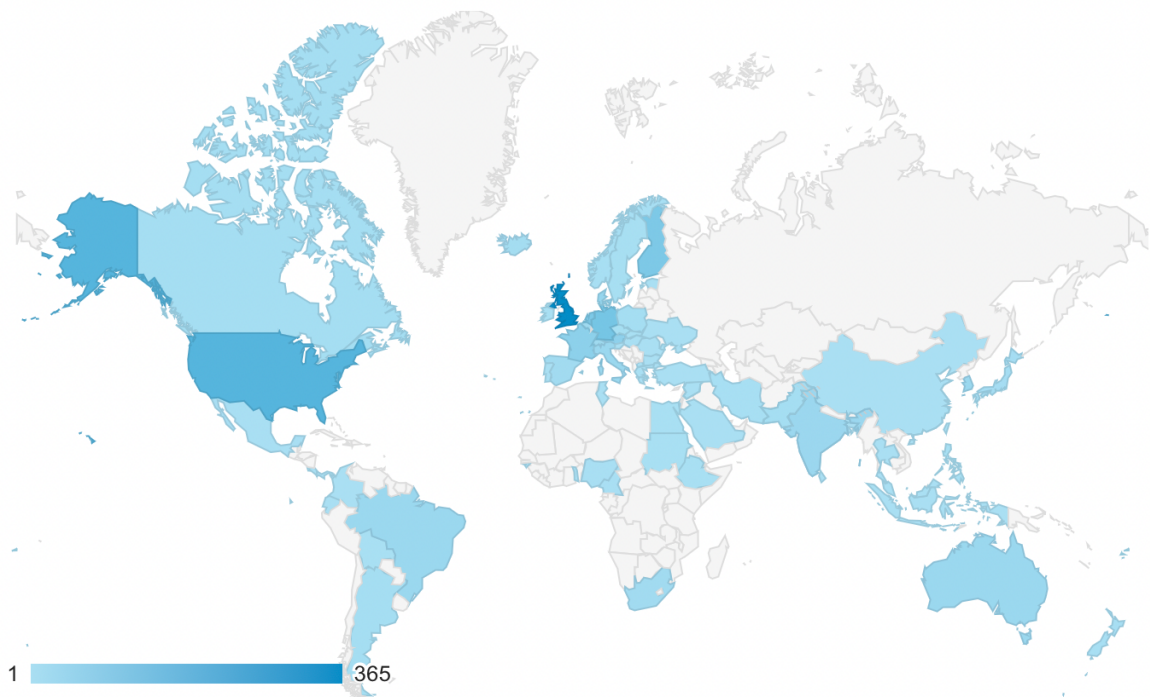


Month index: 0 = End of December of the previous year, 1-12 = Month of the year

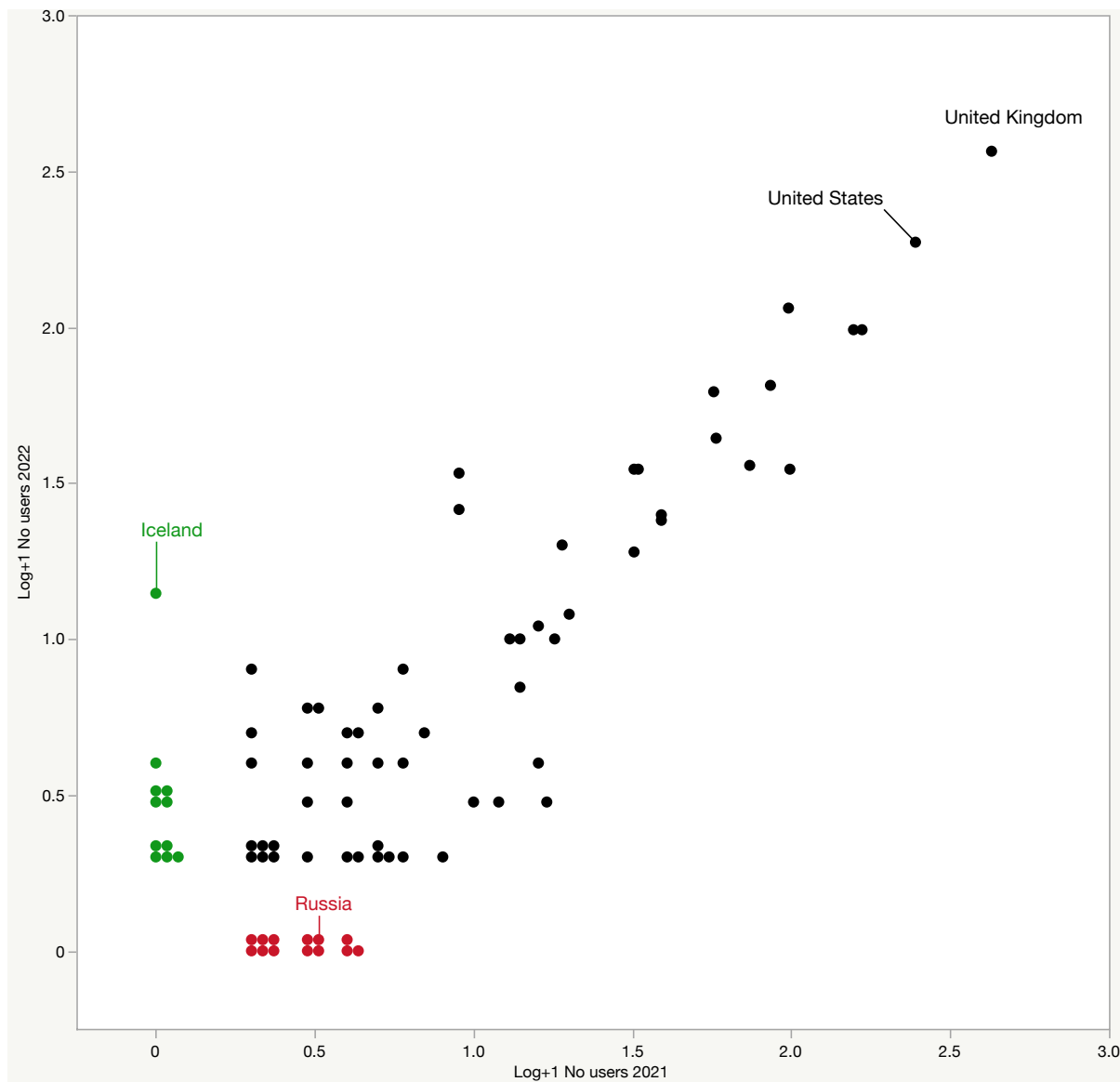
As usual, the most visited page was the “vacancies” page, although numbers were substantially down compared with the previous year, possible due to some problems with updating this (and the rest of the web site) in the first half of 2022, when changes at the University of Copenhagen servers resulted in loss of write access for the webmaster.



The site was visited by users from a wide range of countries during 2022, generally comparable to 2021, with users from the U.K. and U.S.A., unsurprisingly being the largest groups.



In 2022 we did not get any visits from users in Russia (compared with 2 in 2021), and only two visits from China, compared with 12 in the previous year, which is unsurprising given the current restrictions in those countries. However we did get 12 visits from Iceland, but none in 2021.



There are currently 610 *INSECTSm*ail subscribers, with numbers exceeding 600 for the first time in spring 2022

Archivist's report

A new archive page was added to the web site, following the transfer of the international Iussi archive to Copenhagen. The cataloguing of this archive and that of the NW European section is an on-going project, which will resume when the webmaster/archivist has fewer teaching duties in the spring. An updated report from the international archivist, giving more information about recent developments, can be found on the web site at: <https://iussi.org/archive.html>